



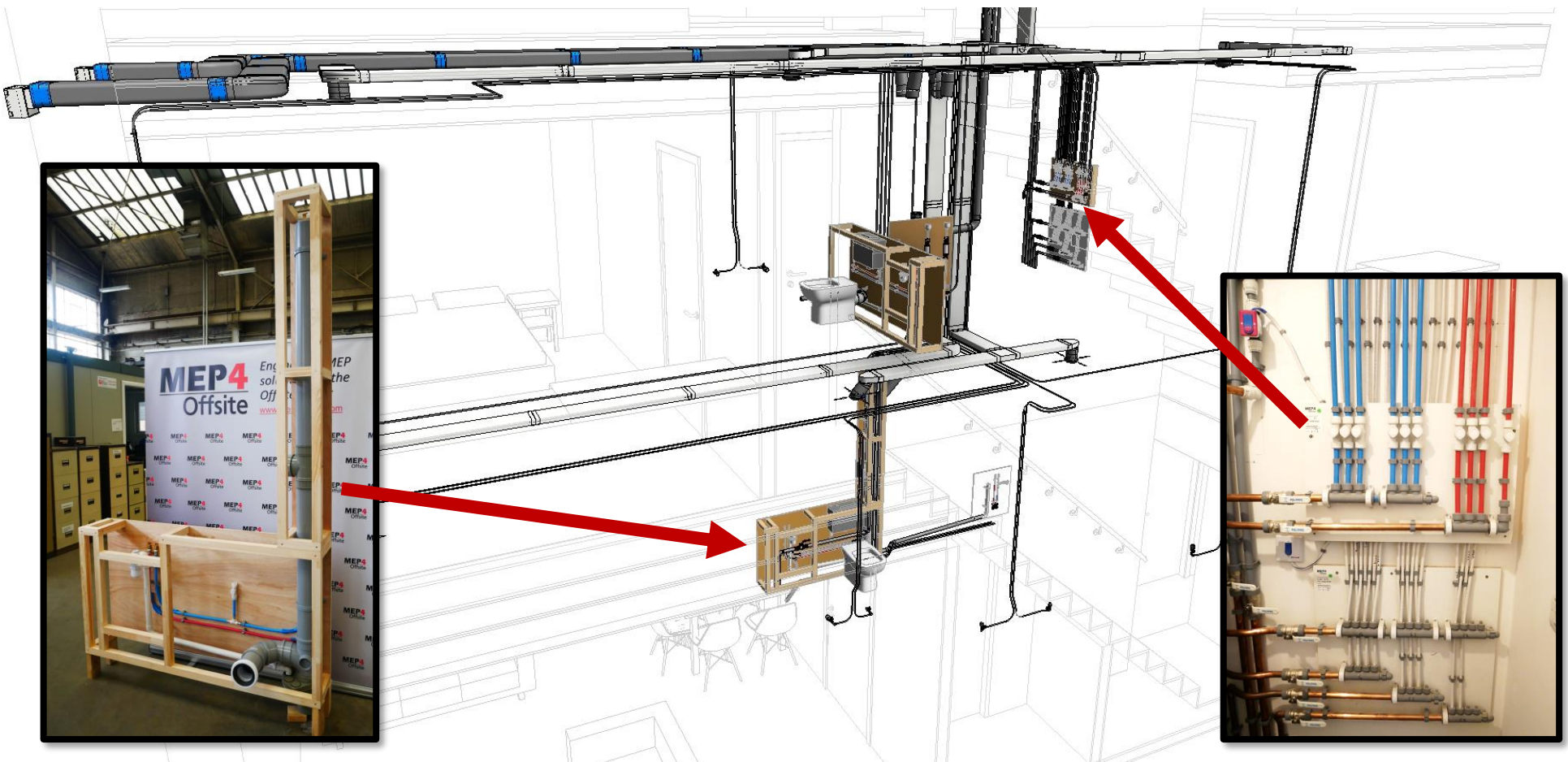
Picture: from Tuskar St., Feb. 2024

- **Client:** ModPods International
- **Description:** pre-assembled plumbing, drainage, ducting and ventilation for modular townhouses and apartments
- **Job:** Sam Manners, Greenwich

- We manufactured a full suite of prefabricated assemblies for the M&E services (incl. all ducting, MVHRs, plumbing, drainage, framed assemblies, and interconnecting pipework), designed against the structural model, such that clashes could be detected and eliminated.
- Routings were optimised digitally to the component level, with precise dimensions of the frames and pipe lengths calculated for manufacture and assembly.



Digitally designed,
digitally built



Engineered MEP solutions for the Offsite sector





Repeatable,
scalable



- As soon as the designs were approved by the client, the digital drawings were released to the shopfloor, and used to generate the code for the CNC machines: “design once; and *click print*”
- In this way, each kit and assembly is a “physical twin” of the digital model, ensuring full traceability to the component level, and also precise repeatable quality at no extra cost.

“MEP4 Offsite made a real difference in helping us move from design to the manufacturing stage by utilising clash detection, 3D Modelling techniques and their knowledge of installation of plumbing, ventilation and drainage services.”

John Farrelly, Mechanical Director, ModPods International



8x COMPLETE HOUSE KITS:

- 8x ducting kits
- 8x MVHRs
- 8x drainage kits
- 8x WC framed assemblies
- 8x framed bathroom assemblies
- 8x interconnecting pipework kits

FULL M&E PACKAGES FOR MULTIPLE HOUSES:

- Reduced truck movements; reduced road miles; reduced diesel consumption; reduced carbon footprint
- All tested and made-to-measure, so zero waste
- Greater productivity
- At no extra cost

